

EXPLANATION:

- Town Boundary
- Study Area Boundary
- 70 - Isopach Lines (dashed where inferred; in feet)
- Pumping Station

NOTES:

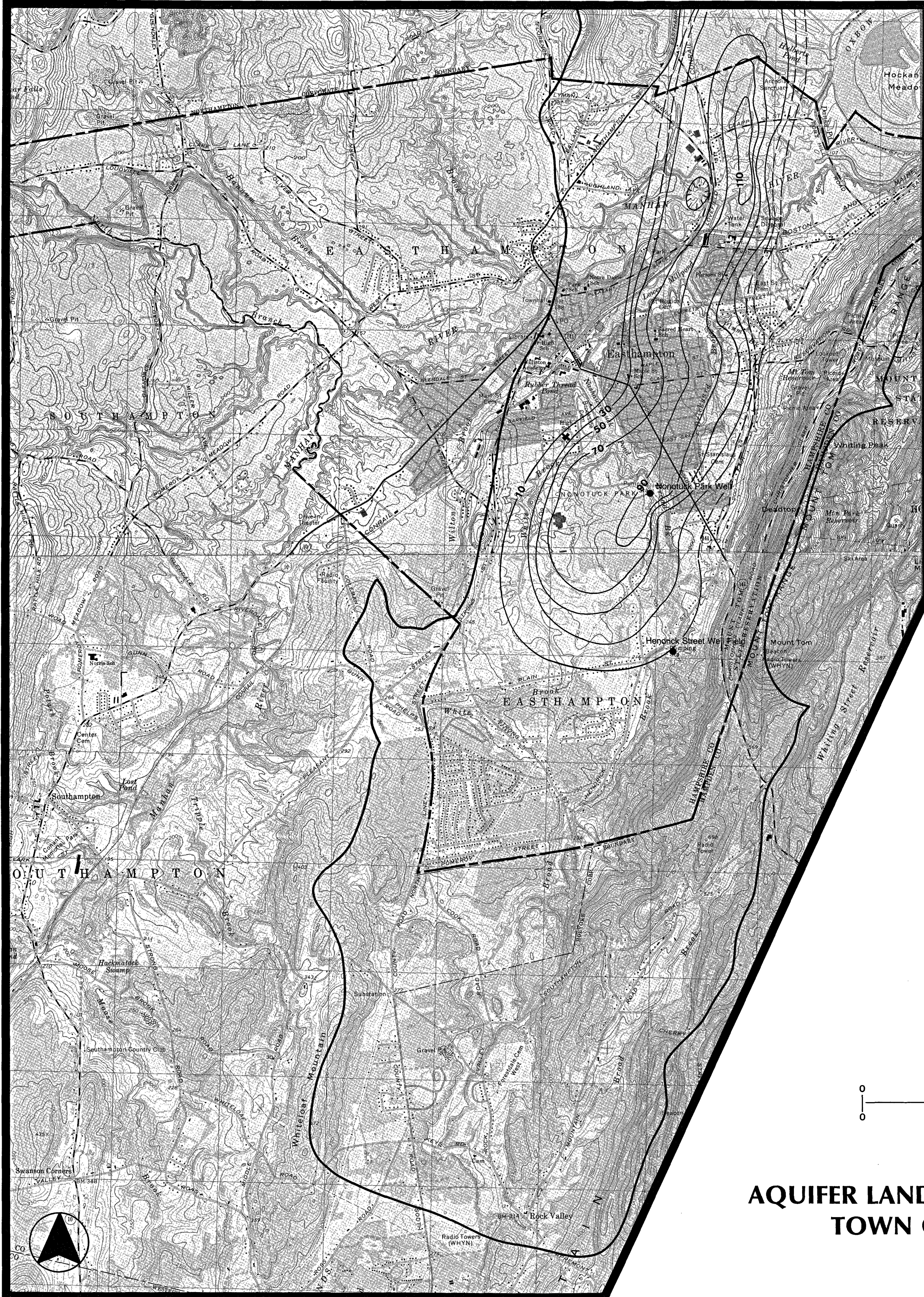
1. Isopach lines correspond to the thickness of glaciolacustrine deposits based on well logs, surficial deposit mapping, and electrical resistivity soundings for the study area.

REFERENCES:

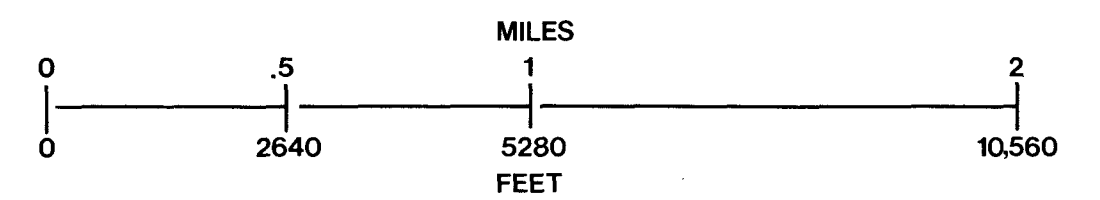
Subsurface Data Points Table 1.
Larsen, F., 1972. Surficial Geology of the Mount Tom Quadrangle, USGS Open-File Report No. 72-219. Reston, VA: USGS, 272 pp.

BASE MAPS:

USGS, 1979. Mount Tom Quadrangle 7.5-Minute Topographic Map. Reston, VA: USGS. 1:25000.
USGS, 1979. Easthampton Quadrangle 7.5-Minute Topographic Map. Reston, VA: USGS. 1:25000.



Contour Interval = 20 Ft.



AQUIFER LAND ACQUISITION STUDY TOWN OF EASTHAMPTON 1987

CLAY ISOPACH

